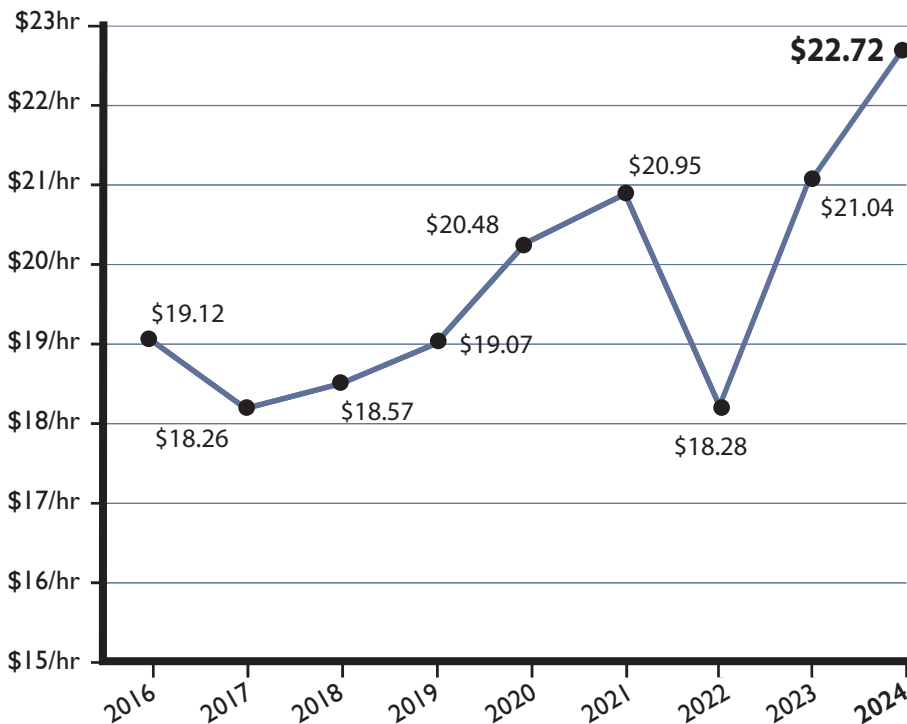
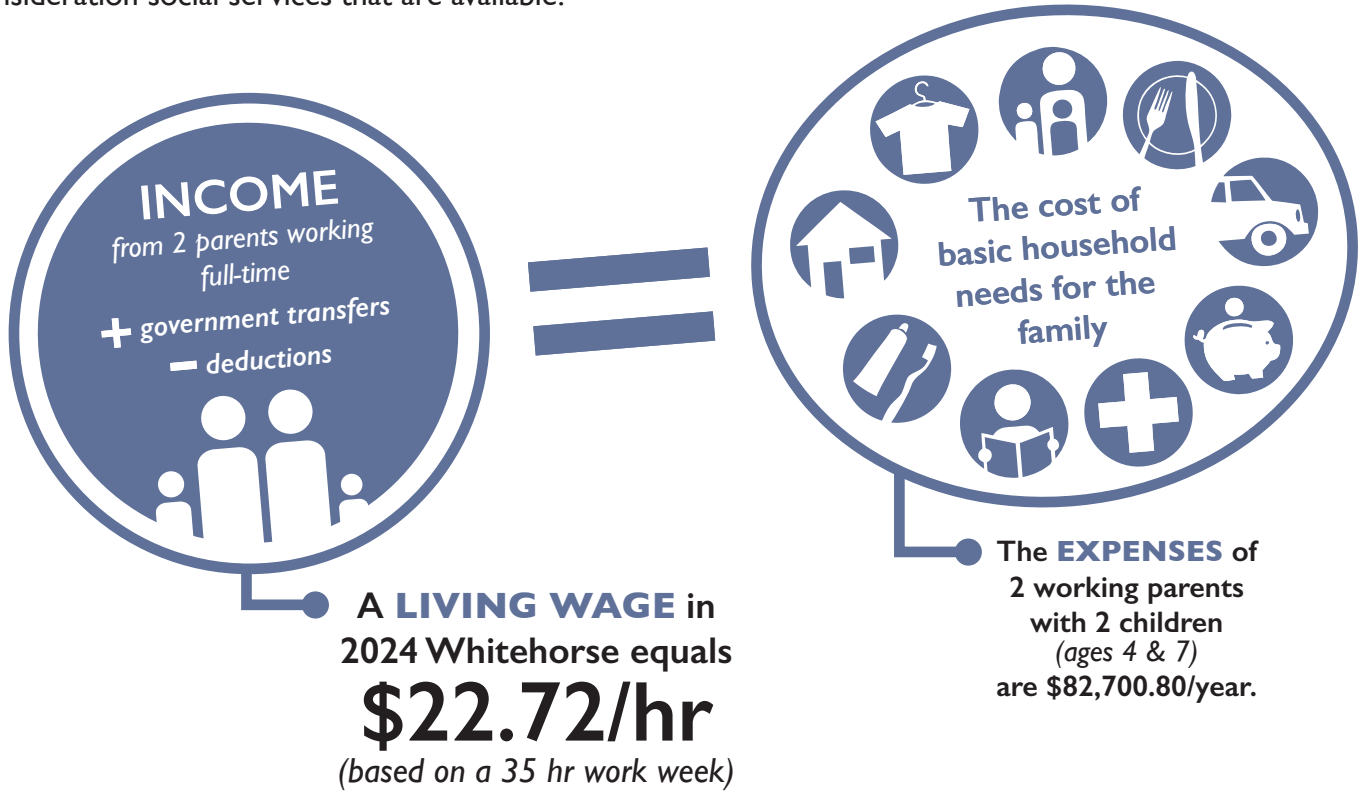


2024 Living Wage in Whitehorse, Yukon

A **LIVING WAGE** equals the hourly wage that a family requires to obtain adequate food, shelter, clothing, transportation, health care, and other basic necessities. Living wage calculations are an effective way to measure the cost of living in a community and take into consideration social services that are available.



The significant increase in the living wage over the past two years highlights the rapidly worsening affordability crisis.

The high cost of rental housing remains the most significant affordability challenge for low- and modest-income Yukoners.

The shelter expense accounted for 35.6% of the reference family's pre-tax income in 2024. This is significantly higher than 30% affordability metric used by the Canadian Mortgage and Housing Corporation.